



UNDERSTANDING STC RATINGS

Standard Transmission Class (STC) is a rating system used to measure how well a building material or partition (such as a wall, ceiling, or floor) can block airborne sound.

A high STC rated wall assembly reduces the amount of noise that leaves the room, providing a better living space for everyone.

STC = AIRBORNE NOISE CONTROL

* The higher the rating the better the noise control!

STC Rating Noise Control

25 POOR
Normal speech understandable

30 MARGINAL
Loud speech understandable

40 GOOD
Loud speech audible

50 VERY GOOD
Loud speech barely audible

55 EXCELLENT
Loud speech not heard



CHANGE IN SOUND LEVEL, DB

1 - 2

3

5 - 6

10

20



CHANGE IN PERCEIVED SOUND LEVEL

Imperceptible

Barely Perceptible

Clearly Noticeable

Significant Change (2x as loud)

Dramatic Change (4x as loud!)

From Day One, our plan has been simple:

“Take what no one wants anymore and recycle it into something that provides high performance and value.”

MP Global Products produces high-performing products made primarily from recycled materials.

SUSTAINABILITY INSPIRED BY INNOVATION

MPglobal

(276) 582 9695 · acoustic@mpglobalproducts.com
mpgbuildingmaterials.com

QUIETURE™

SoundBoard

SUPERIOR SOUND ABSORPTION PANELS FOR
FLOORS • WALLS • CEILINGS



THE *Art* OF SILENCE

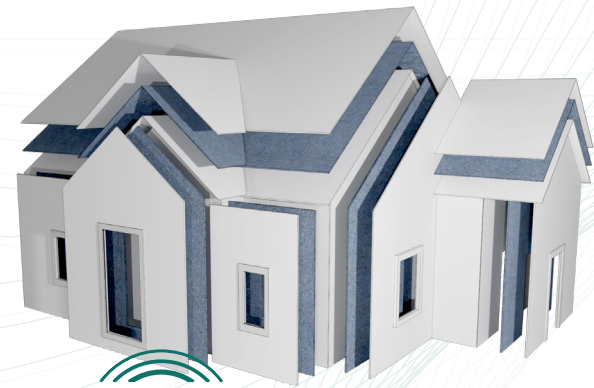
STC SOUND NUMBERS & WALL ASSEMBLIES

QUIETURE™ SoundBoard



Quieture SoundBoard is a unique acoustic absorption technology that can be installed in floors, walls and ceilings!

Beyond its outstanding noise control, Quieture SoundBoard features a recycled, lightweight construction, making it easy to handle with fewer loads, minimal tools, and less mess.



SOUND CONTROL
FOR MODERN LIVING

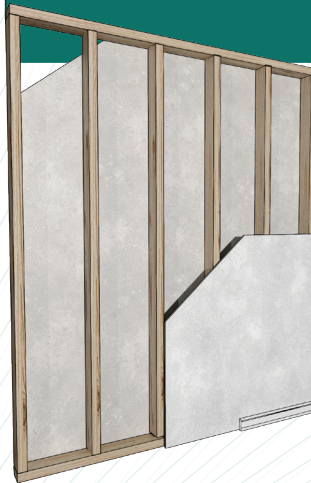
METHODOLOGY OF TESTS

These tests help to further understand the performance of Quieture SoundBoard in relation to its airborne sound blocking capabilities.

This testing method was performed on the most common interior wall assemblies built in America, and in particular, the most difficult wall to control sound.

WALL ASSEMBLIES

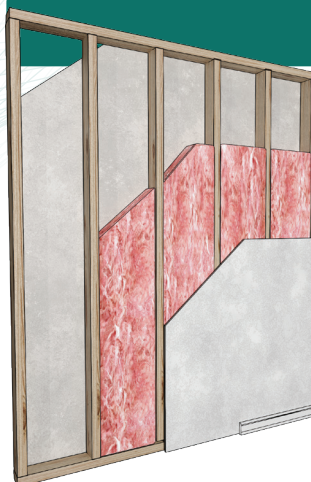
Standard empty wall



STC 30

- 1/2" Drywall
- 2x4 Wood framing
- Framed on 16" centers
- No insulation
- 1/2" Drywall

Standard insulated wall



STC 34

- 1/2" Drywall
- 2x4 Wood framing
- Framed on 16" centers
- R13 Fiberglass insulation
- 1/2" Drywall

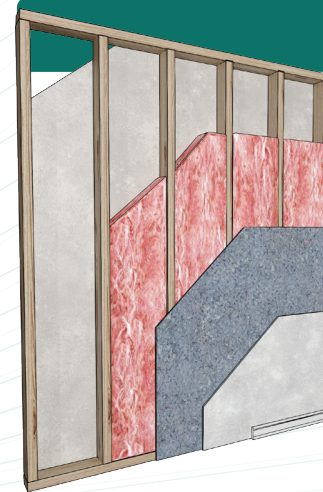
Empty wall with one side Quieture



**STC 43
GOOD**

- 1/2" Drywall
- 2x4 Wood framing
- Framed on 16" centers
- **Quieture SoundBoard**
- 1/2" Drywall

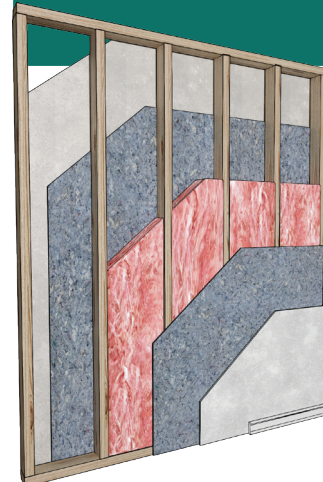
Insulated wall with Quieture on one side



**STC 48
BETTER**

- 1/2" Drywall
- 2x4 Wood framing
- Framed on 16" centers
- R13 Fiberglass insulation
- **Quieture SoundBoard**
- 1/2" Drywall

Insulated wall with Quieture on two sides



**STC 50
BEST**

- 1/2" Drywall
- **Quieture SoundBoard**
- 2x4 Wood framing
- Framed on 16" centers
- **Quieture SoundBoard**
- 1/2" Drywall